

**KANSAS CITY ARTCC AND INDIANAPOLIS ARTCC
LETTER OF AGREEMENT**

SUBJECT: INTERFACILITY COORDINATION

EFFECTIVE: 4 April, 2026

-
1. **PURPOSE:** This agreement establishes coordination procedures and defines delegation of airspace between VATUSA Indianapolis ARTCC (ZID) and VATUSA Kansas City ARTCC (ZKC). This agreement is supplemental to procedures contained within FAA Order 7110.65.
 2. **DISCLAIMER:** Information contained herein is designed specifically for use in a virtual air traffic control environment. It is not applicable, nor should it be referenced for live operations in the National Airspace System (NAS).
 3. **GENERAL:**
 - a. Specific routes and altitudes must be assigned for arrivals and departures as depicted in [Attachment A](#) and [Attachment B](#).
 - b. Either Center may vector aircraft up to **30 degrees** without prior coordination provided the aircraft is within **20 miles** of the boundary.
 - c. ZID shall deliver **EVV and HUF** departures to ZKC climbing to **AOB FL230**. They need not coordinate the IAFDOF.
 - d. For aircraft AOA FL410, acceptance of a handoff constitutes coordination of IAFDOF.
 - e. ZID shall deliver **SDF+ departures via GTGON/APALO or LLIZY/DAAVE** to ZKC climbing to **AOB FL340**.
 - f. CMIz and HUFz release control for turns up to 30 degrees and descents for aircraft landing at HUF, PRG, 1H8 and RSV (HUFz) or CMI, MTO and DNV (CMIz).
 - g. **HUFz** must hand **DNV/MTO** arrivals to **CMiz** descending to **AOB 40**.

DEFINITIONS:

Boundary refers to the ZDC/ZID common boundary.

ABC+ refers to the ABC airport and other satellite airports within ABC ATCT.

ABCz refers to an unspecified sector of the ABC ATCT, used when a specific sector is not specified.

IND Sats = EYE, MQJ, TYQ

SDF+ = SDF, LOU

4. ATTACHMENTS:

- a. Attachment A - ZKC→ ZID Restrictions
- b. Attachment B - ZID → ZKC Restrictions
- c. Attachment C - Airspace Sectors

5. AUTOMATED INFORMATION TRANSFER (AIT):

- a. When ZID is split above/below FL230 at the border; IND+ arrivals at or above FL250;
 - i. ZKC must issue a clearance to cross the boundary at FL250 and handoff to ZID high (RSH/PXV).
 - ii. If traffic is not a factor, ZID low will accept the handoff and handoff to ZID low.
 - iii. If traffic is a factor, ZID high (RSH/PXV) will verbally coordinate with ZKC.

- iv. Once ZKC observes ZID low accept the handoff, they will transfer comms directly to the low sector.
- b. When ZKC has a EVV, OWB or HUF arrival AOA 140;
 - i. ZKC must issue a clearance to descend to 140 and handoff to ZID low.
 - ii. If traffic is not a factor, ZID low will accept the handoff and handoff to EVVz/HUFz.
 - iii. If traffic is a factor, ZID low will verbally coordinate with ZKC.
 - iv. Once ZKC observes EVVz/HUFz accept the handoff, they will transfer comms directly to the ATCT.
- c. When ZID has a DEC arrival AOA 110;
 - i. ZID must issue a clearance to descend to 110 and handoff to ZKC low.
 - ii. If traffic is not a factor, ZKC low will accept the handoff and handoff to CMIz.
 - iii. If traffic is a factor, ZKC low will verbally coordinate with ZID.
 - iv. Once ZID observes CMIz accept the handoff, they will transfer comms directly to the ATCT.

ATTACHMENT A
ALTITUDE AND ROUTE RESTRICTIONS FROM ZKC TO ZID

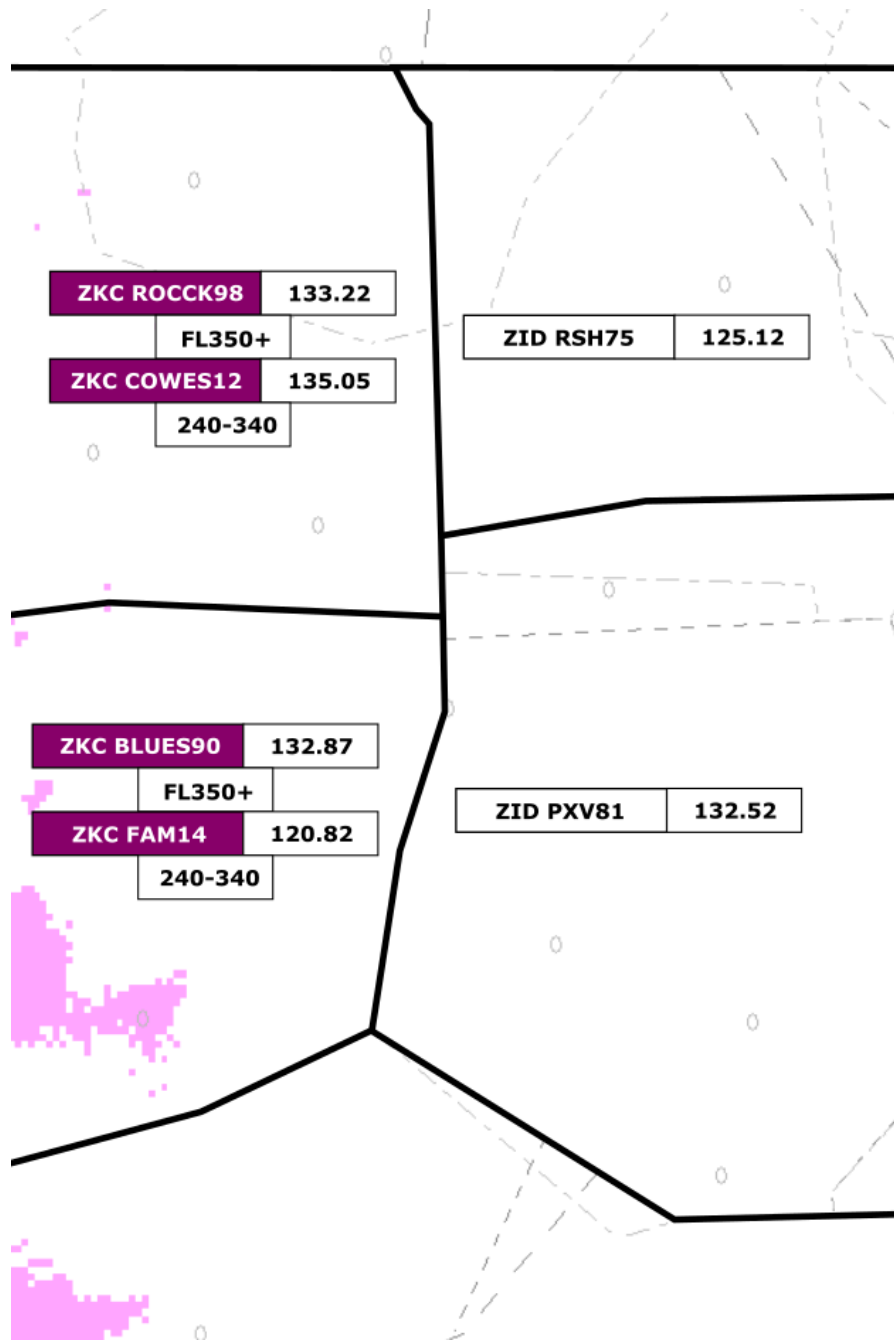
Destination	Route/Via	Type	Restrictions	Notes
CMH	VHP JADUB DUBLN# or VHP JADUB IKALE MELZZ	All	n/a	Does not include STL departures
CVG, LUK, HAO	JDUNN/TERGE SARGO# or JRICO HEREE SARGO	All	AOB FL310	ZID control for descent to FL240 w/in 20nm of boundary
	JRICO SARGO#	All	AOB FL310	ZID control for descent to FL240 w/in 20nm of boundary. For aircraft north of JDUNN.
DAY/FFO	SHB RID	All		
EVV/OWB	All	All	DESC 140	AIT.
HUF	All	All	DESC 140	AIT.
IND+	TERGE SMUKE# or PXV RACYR#	All	AOB FL330	ZID control for descent w/in 20nm of boundary
	USIRE KOLTS# or WIDAM SMUKE# or BIB RACYR# or BIB RACYR DRWUD VHP	All	AOB FL250	ZID control for descent w/in 20nm of boundary
LAF	(North of J24)	AOB FL230		ZID control for descent.
	(South of J24)	AOB FL290		ZID control for descent.
SDF+	SHARE JMONY#	All	AOB FL330	ZID control for descent w/in 20nm of boundary
	IMOUT MBELL#	All	AOB FL290	ZID control for descent w/in 20nm of boundary

ATTACHMENT B
ALTITUDE AND ROUTE RESTRICTIONS FROM ZID TO ZKC

Destination	Route/Via	Type	Restrictions	Notes
ALN/BLV/CPS	AARCH	All	AOB FL280	ZKC control for descent to FL240 w/in 20nm of boundary
BMI	North of COWES	All	AOB FL230	ZKC control for left turns and descent to 11000
	South of COWES	All	AOB FL280	ZKC control for left turns and descent to FL240
DEC	All	All	DESC 110	AIT
STL	VHP AARCH#	Jet	AOB FL300	North of STAR may be cleared direct AARCH. ZKC control for descent within 20nm of boundary.
	PXV BOOSH#	Jet	AOB FL320	Non-RNAV must be verbally coordinated
	All	Props	AOB FL230	
SUS	(RSH Sector) BUUDD BUUDD# or AGNUS CSX SUS	All	AOB FL280	ZKC control for descent to FL240 w/in 20nm of boundary
	(PXV Sector) MWA SLVER SLVER# or MWA SLVER SUS	All	AOB FL320	

ATTACHMENT C
AIRSPACE SECTORS

High Altitude Sectors (FL240+)



Low Altitude Sectors (FL230-)

